



ParaTour 2019

Electronic Theatre Controls

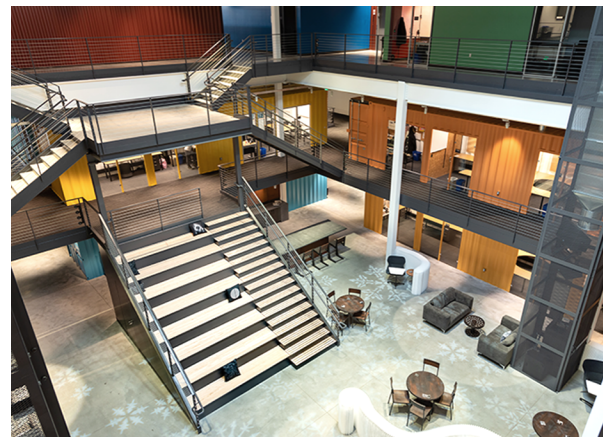
Join Paranet members and guests in hearing about their journey. ETC is a privately held corporation with their global headquarters and research & development in Middleton, Wisconsin. ETC produces lighting fixtures, lighting control consoles, dimming equipment, power distribution, networking equipment, and rigging systems.

ETC is known to baffle visitors when they walk into the lobby for the first time. It was designed as an iconic space for anyone who works or visits ETC Middleton.

Their Research & Development is located within the latest expansion of 40 containers incorporated in their headquarters. Make sure to check this out on our tour!

ETC is vertically integrated and their primary type of processes include:

- Automated Circuit board manufacturing
- Automated sheet metal fabrication, Amada robotic press brakes, Amada fiber laser punch, form and tapping
- Automated and customized powder painting lines
- Power and free assembly cells and lines
- LED light fixture assembly



Tuesday, November 5, 2019

9 AM - 12 PM

**Electronic Theatre Controls -
Middleton, WI**

PARANET MEMBER
COMPANY GUESTS: FREE
NON-PARANET MEMBER
COMPANY GUESTS: \$79

Register at
www.paranetgroup.com/events
or call 262-796-2560

You will see a fine example of a manufacturing organization and a Paranet member company.